

# CEKA --- PRECI-LINE

INSTALLATION MANUAL

# CEKA PRECI-LINE DIGITAL LIBRARY

powered by  dental wings

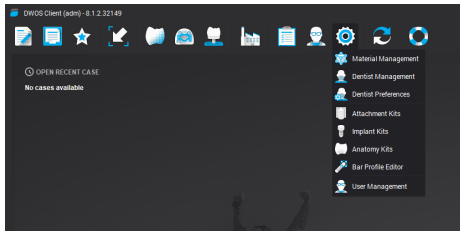


# INSTALLATION GUIDE FOR THE CEKA PRECI-LINE DIGITAL LIBRARY

Save the library to a user accessible location on your PC or laptop.

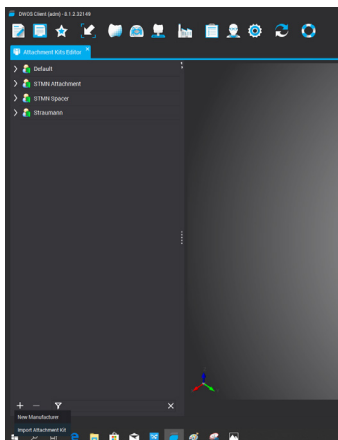
## STEP 1:

Select **Settings** -> **Attachment Kits**.



## STEP 2:

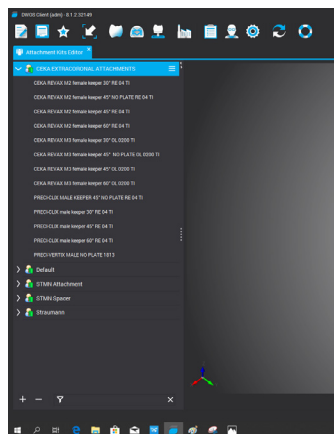
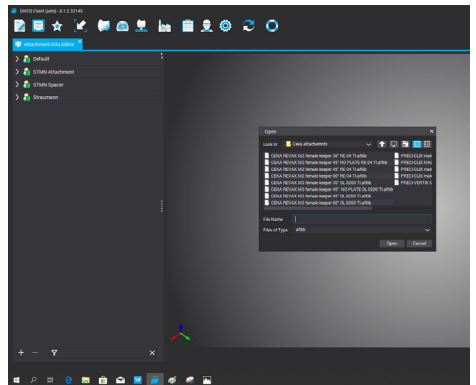
Click **+** and select **Import Attachment Kit**.



## STEP 3:

Select the attachments either separately or all at once, then click **Open**.

The CEKA PRECI-LINE kits are imported into the software and available in CAD for fixed restorations.



**THE FILES ARE NOW AVAILABLE IN THE DENTAL WINGS SOFTWARE.**

For more information about the installation and configuration of the CEKA PRECI-LINE digital library, please contact [info@CKPL.eu](mailto:info@CKPL.eu).

We will gladly welcome you and your team for a product-specific training on the use of the CEKA PRECI-LINE digital library.

CEKA  

---

PRECI-LINE