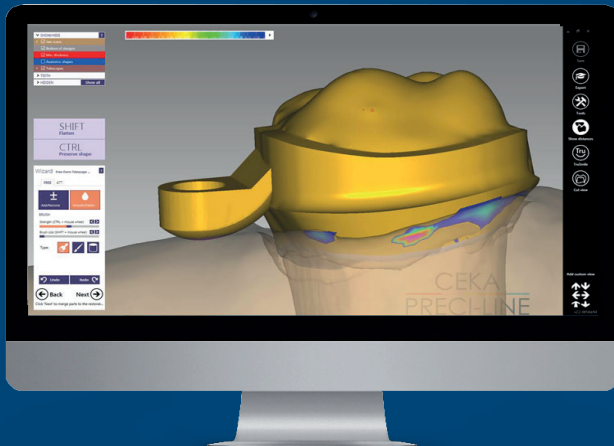


CEKA PRECI-LINE

INSTALLATION MANUAL CEKA PRECI-LINE DIGITAL LIBRARY powered by **exocad**



INSTALLATION GUIDE FOR THE CEKA PRECI-LINE DIGITAL LIBRARY

Save the library to a user accessible location on your PC or laptop.

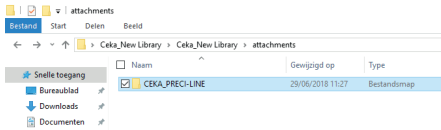
STEP 1:

Unzip the CKPL DIG LIB zip file.



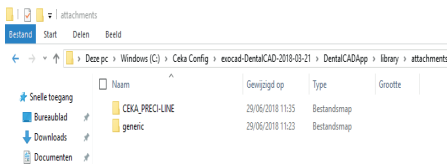
STEP 2:

Go in the *ceka_New Library* folder to the *attachments* folder and copy the complete **CEKA_PRECI-LINE** file.



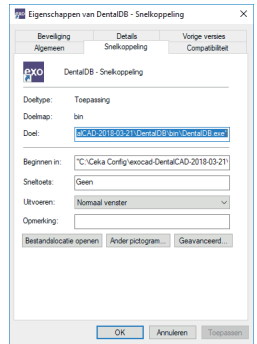
STEP 3:

Now go to the exocad file location **DentalCADApp > library > attachments** and paste the **CEKA_PRECI-LINE** file.



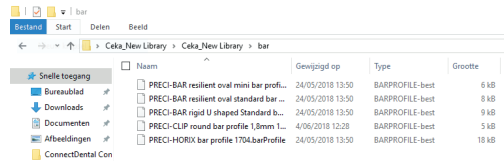
TIP: Forgot the file location?

Right-click on the exocad logo and go to **properties**. Here you will find the file location.



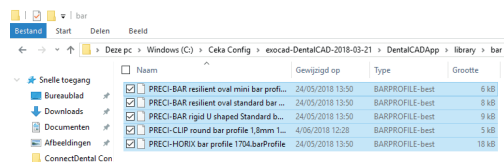
STEP 4:

Go in the *ceka_New Library* folder to the *bar* folder and copy the individual files.



STEP 5:

Now go to the exocad file location **DentalCADApp > library > bar** and paste the files.



THE FILES ARE NOW AVAILABLE IN THE EXOCAD SOFTWARE.

For more information about the installation and configuration of the CEKA PRECI-LINE digital library, please contact info@CKPL.eu.

We will gladly welcome you and your team for a product-specific training on the use of the CEKA PRECI-LINE digital library.

CEKA

PRECI-LINE